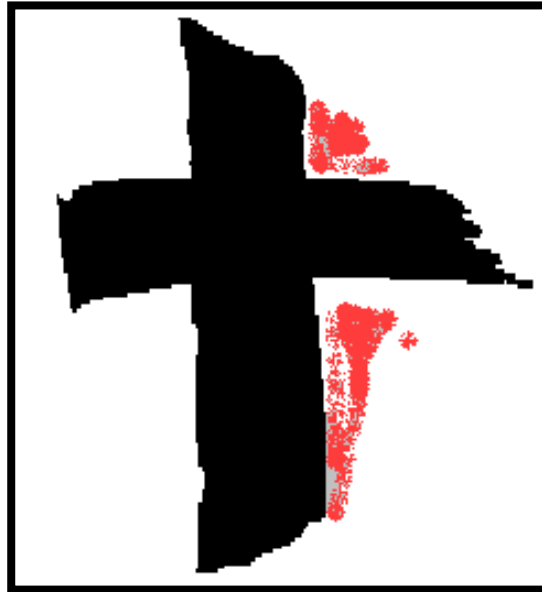


# *Fit for Mission?*



'Then Jesus called the twelve together and gave them power and authority ... and He sent them out to proclaim the Kingdom of God and to heal.' (*Luke 9:1-2*)

**Working Papers and Maps**

**North & West Cumbria Areas**



## Proposal Review Sheet

The objectives of the 'Fit for Mission' review are to help you strengthen the sacramental and mission life of yourself, your parish, and the diocese. To do this in a realistic way, it is also necessary to take into account the anticipated reduction in the number of priests and Mass going congregations. Therefore, to assist you in reviewing the draft initial proposals you may find it useful to consider the following questions:

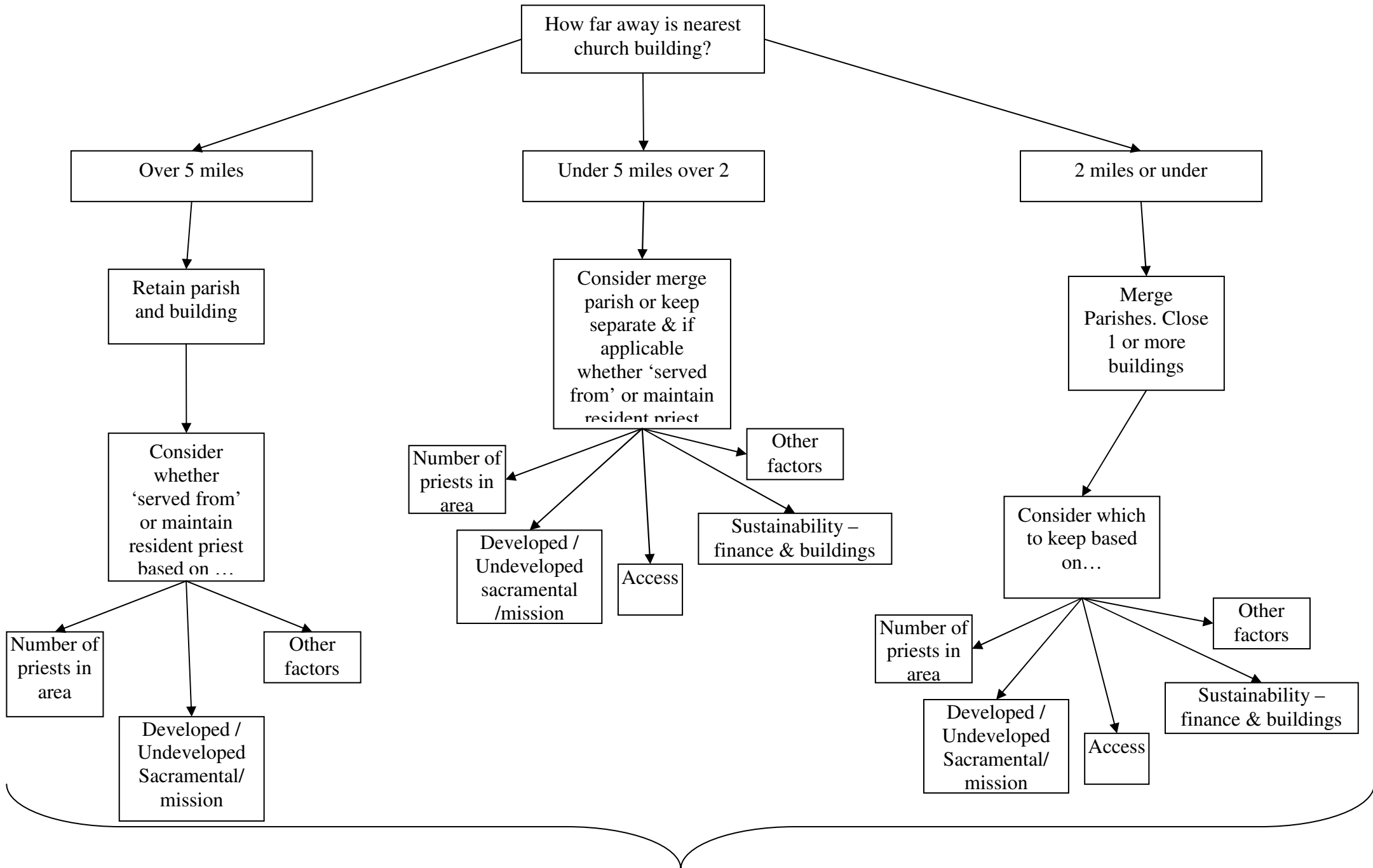
1. Does the Parish Summary Form clearly identify the strengths and development areas of your parishes' sacramental and missionary life?
  - a. *What can you do to build on the strengths and to address the areas the parish would benefit from developing?*
2. Where applicable, are the proposals for linking or merging your parish, suitable for your area?
  - a. For example: will it bring together people from adjacent communities, to enable a fuller celebration of the Mass and greater participation in the Church's mission through pooling people's charisms and financial resources?
  - b. Does the proposal assist in ensuring the sustainability of the linked or merged parishes?
  - c. Are the number and location(s) of church building(s) proposed sufficient for the Church in your area to fulfil its mission, taking into account the decline in Catholics regularly attending Mass?
  - d. Does the proposal adequately take into account any future developments in the local area of which you are already aware?
  - e. *What steps can be taken now to assist linking or merging to take place?*
3. Does the proposal provide a long term missionary presence in areas that have particular needs, e.g. social deprivation, migrant ethnic groups etc?
  - a. Is the proposal of a 'lighthouse' church suitable for your area?
  - b. Is the proposal of a 'gem' church suitable for your area?

Any suggestions, and amendments should be first co-ordinated by your parish. These may then either be feed into the consultation held by your Deanery Pastoral Council or sent from the parishes directly to the Core Group, via the Secretary.

**Please remember that firstly, any changes to the initial draft area proposal must be workable and sustainable; secondly, that the Parishes *and* Deanery Pastoral Councils need to submit their responses to the draft proposal, by the 26th January 2008.**

If you have any questions please contact the Mission Review's Core Group Secretary, Fr Robert Billing, The Pastoral Centre, Balmoral Road, Lancaster, LA1 3BT, or by email to:  
[mission.review@lancasterrcdiocese.org.uk](mailto:mission.review@lancasterrcdiocese.org.uk)

# Decision Flow Chart



## Mission Review - Initial Draft proposal for Cumbria North and West

The number of priests has been assumed to reduce as in the following table

Parish Groupings	Parish Priests available	2007	2010	2012	2016	2020
<i>Carlisle Group - 6 parishes - Our Lady and St. Joseph St. Bede, St. Margaret Mary, St. Edmund, Christ-the-King and St. Augustine including Our Lady of Good Council, Longtown</i>		5½	4	4	3	3
<i>Penrith/Appleby/Kirkby Stephen Group - 2 parishes - St. Catherine Penrith including St. Norbert, Shap, Our Lady of Appleby including Holy Family, Kirkby Stephen</i>		2	2	2	2	2
<i>Warwick Bridge/ Brampton/ Alston Group - 1 parish - Our Lady and St. Wilfrid Warwick Bridge, including Brampton St. Ninians and also Alston St. Wulstan</i>		1½	1	1	1	1
<i>Cockermouth/Maryport/Wigton/Silloth Group - 3 parishes - St. Joseph Cockermouth and Our Lady and St. Patrick Maryport including Our Lady of the Assumption Silloth and St. Cuthbert, Wigton</i>		3	3	2	2	2
<i>Workington Group - 3 parishes - Our Lady and St. Michael, St. Gregory and St Mary Harrington</i>		3	3	2	2	1
<i>Whitehaven Group - 3 parishes - St. Begh including SS. Gregory and Patrick, St. Benedict and St. Mary, Kells</i>		3	3	2	2	1
<i>Cleator/Frizington/Egremont Group - 4 Parishes - St. Mary, Cleator including St. Bega, St. Joseph Frizington, St. Mary Egremont and St. Joseph Seascale</i>		3	3	3	2	2
	<b>Total</b>	<b>21</b>	<b>19</b>	<b>16</b>	<b>14</b>	<b>12</b>

## **Maps**

The maps appended here have been prepared using maps from the 'Ordnance Survey Explorer' series copied under the Diocesan Licence no. 100020449. Churches have been located using the Diocesan Directory of parishes and the Street Atlas for Lancashire. The appended maps have been reduced from A3 size to A4 to facilitate downloading from the 'Fit for Mission' web site and for emailing purposes. These maps have been used by the Core Group to indicate the proximity of churches in areas where several churches are within walking distance of each other.